



## TO LET

2 Bedroom 2 Bathroom  
Apartment Upper Ground  
Southbank Tower  
London, SE1 9PL



**SOUTHBANK  
ESTATE AGENTS**

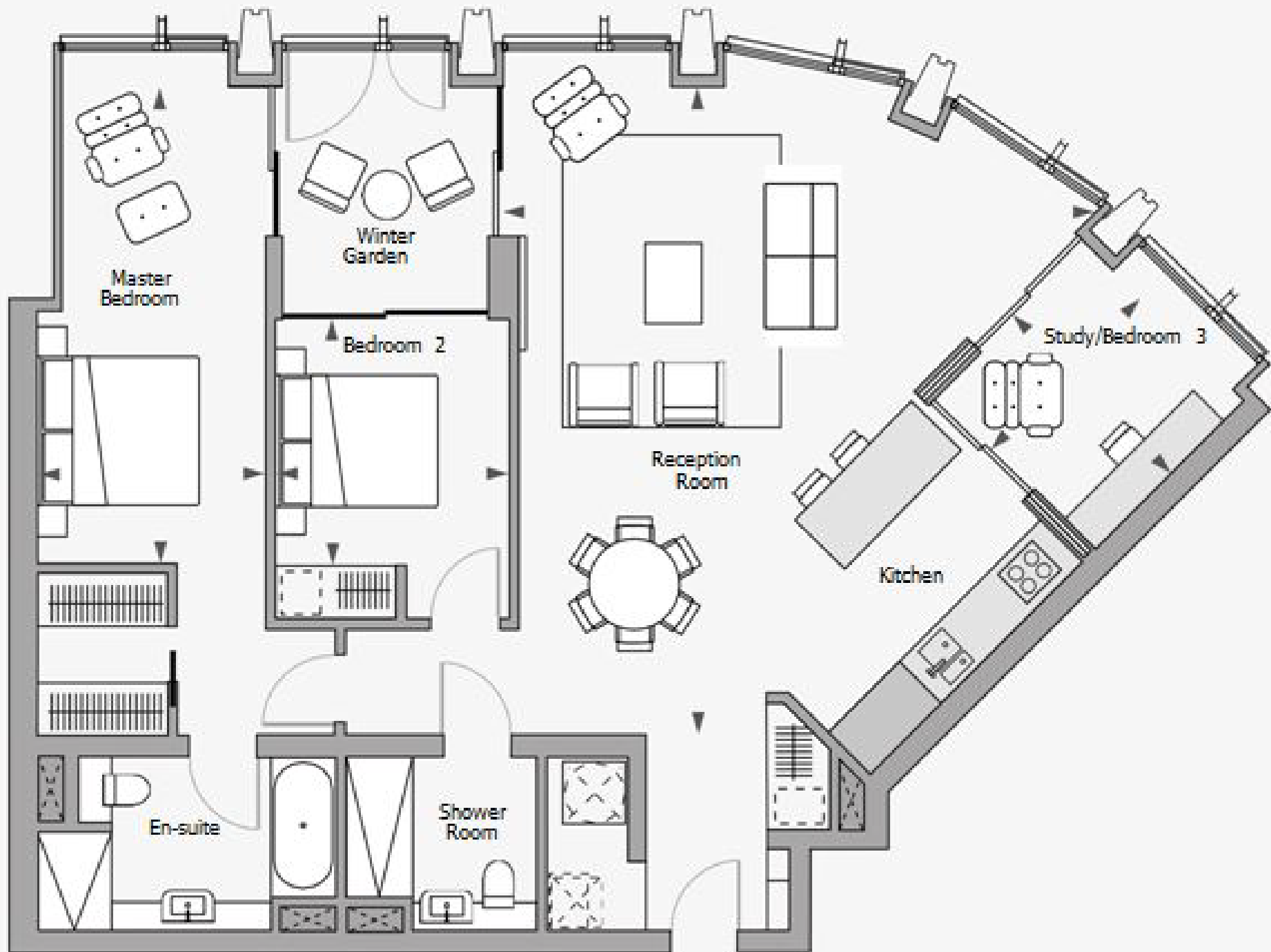
A luxurious 2 bed plus study and 2 bath apartment with commanding north river facing views of the City & St Paul's is now available for letting in the iconic Southbank Tower SE1. Compromising of 1364 sq ft this apartment can be furnished and is available now with fabulous facilities.

This fabulous apartment encompasses a fully fitted impressive kitchen, with an open plan reception room designed to entertain with northerly river views of the City, St Pauls and other famous London landmarks. The reception is bathed in natural light that pours in through the floor to ceiling windows throughout. Both the main bathroom and the en-suite are fully fitted to a superb standard. Both bedrooms are generously sized and include an abundance of storage space, which is true of the whole apartment as it makes excellent use of the space available.

The apartment is of an outstanding standard. Southbank Tower is a confident, soaring design that is a distinctive landmark on London's' cultural mile. The building is based between The Royal Festival Hall and Shakespeare's Globe and adjacent to the iconic Sea Containers House, now home to the Mondrian Hotel. With Southwark and Blackfriars Underground stations, a short distance away it allows quick access to Central London as well as connecting train stations to the airports and other parts of England.

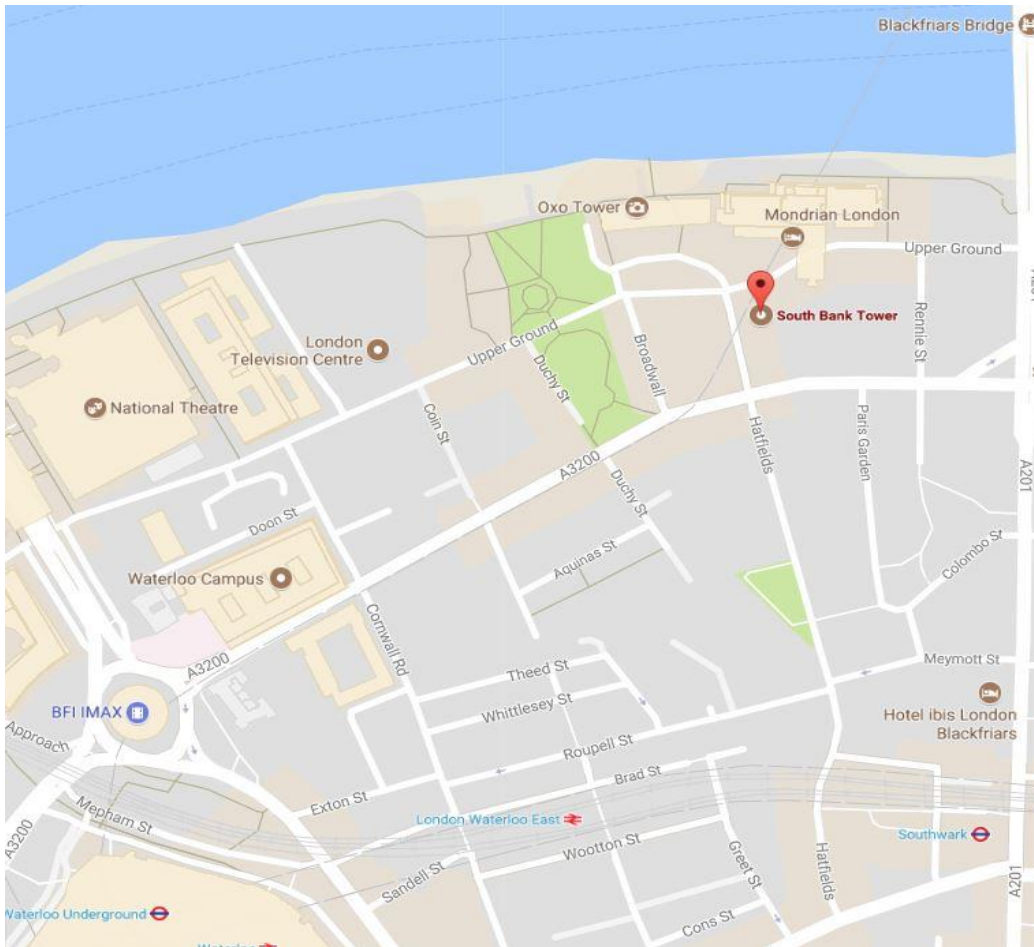
Southbank Tower residents benefit from high-speed lift access, an indoor swimming pool and fully fitted gym for residents. Further situated on the 10th floor with breath-taking views of London, is a state of the art Residents Business centre, Residents Entertaining Lounge, Communal Roof garden and Cinema Room.





Excellent transport links and shops and amenities are nearby  
The tower is located close to parks, garden squares, the river, hospitals and The Houses of Parliament.

Located on the South Bank you are just a short distance to the theatres, restaurants, and attractions of Covent Garden, the trendy upbeat Soho, the shopping of Oxford Street and the green spaces and famous historical squares that London has to offer.



## Transport links:

Southwark (0.3 miles)

6 mins

**Jubilee**

Waterloo East (0.3 miles)

6 mins

**southeastern**

Waterloo Station (0.4 miles)

9 mins

**South Western Railway**

Waterloo Underground (0.5 miles)

10 mins

**Bakerloo**

**Jubilee**

**Northern**

**Waterloo & City**

Blackfriars Station (0.5 miles)

10 mins

**Thameslink**

**southeastern**

Blackfriars Underground (0.5 miles)

10 mins

**Circle**

**District**



**Phone:** 0203 600 1906

**E-mail:** [southbank@coldwellbanker.co.uk](mailto:southbank@coldwellbanker.co.uk)

**Visit:** [www.coldwellbanker.co.uk/Southbank](http://www.coldwellbanker.co.uk/Southbank)

Coldwell Banker Southbank

Unit 3

Cedar Court

Royal Oak Yard

London SE1 3GA

