

Terms and Conditions

Price

Offers over £2,150,000 Subject To Contract

Tenure

Leasehold; approx 999 remaining years from 25/12/2006

Service Charge:

£2046.57 per quarter (includes hot water, heating & concierge)

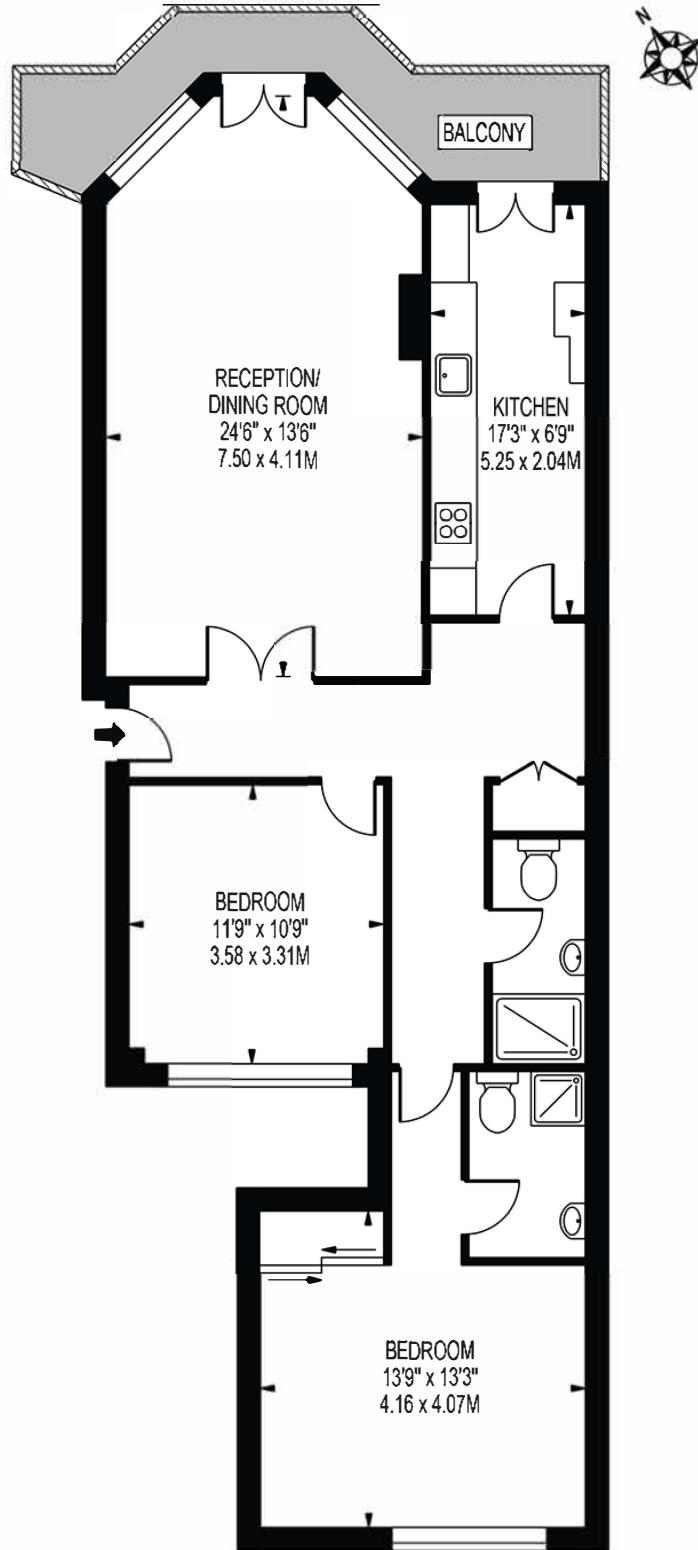
Ground Rent:

£450 pa

Royal Borough of Kensington & Chelsea

CADOGAN SQUARE

APPROXIMATE GROSS INTERNAL FLOOR AREA: 1001 SQ FT - 93.03 SQ M



FIRST FLOOR

FOR ILLUSTRATION PURPOSES ONLY