



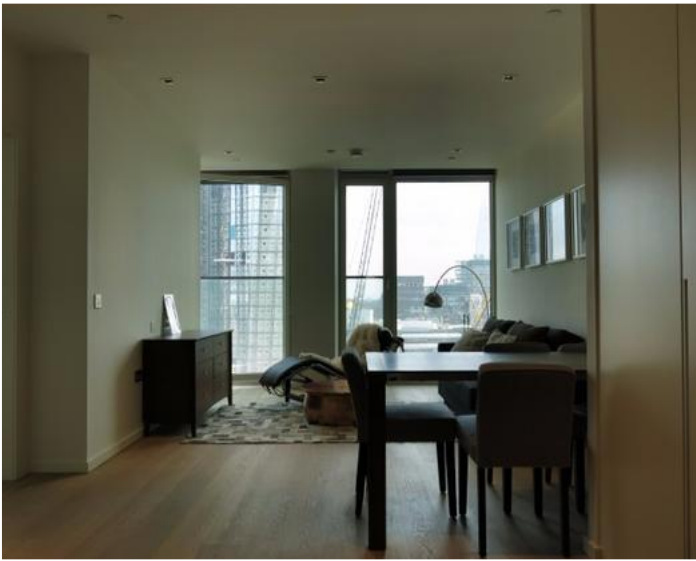
## Upper Ground, London SE1

A spectacular luxury 1 bedroom, 1 bathroom apartment located within this superb development is situated on the 14th floor with north-east breath-taking river facing views. It is a confident, soaring design that is a distinctive landmark on London's cultural mile, between the Royal Festival Hall and Shakespeare's Globe Theatre and adjacent to the iconic Sea Containers House, now home to The Mondrian Hotel. With Southwark and Blackfriars Underground stations, a short distance away it allows quick access to Central London as well as connecting train stations to the airports and other parts of England. This very spacious and sensational apartment measuring 688sqft (largest one bedroom floorplate in the building) has a multitude of benefits including a fully fitted modern kitchen with integrated appliances, open plan to a large reception room ideal for entertaining with windows that stretch from floor to ceiling, maximising natural daylight and air-conditioning in every room. With exceptional views from its prime position on the banks of the River Thames many iconic London landmarks can be enjoyed, including the Houses of Parliament and London Eye to the west and St. Paul's Cathedral and Tower Bridge to the east.

Bedroom : Bathroom : Reception Room : Kitchen : Lift : 24hr Concierge : Gym, Pool, Steam And Sauna Room : Communal Roof Garden And Cinema Room : Parking : EPC Rating TBC

**£870,000 Subject To Contract**

Leasehold, expires 08/10/3017



# Terms and Conditions

## Price

£870,000 Subject To Contract

## Tenure

Leasehold, expires 08/10/3017

1

